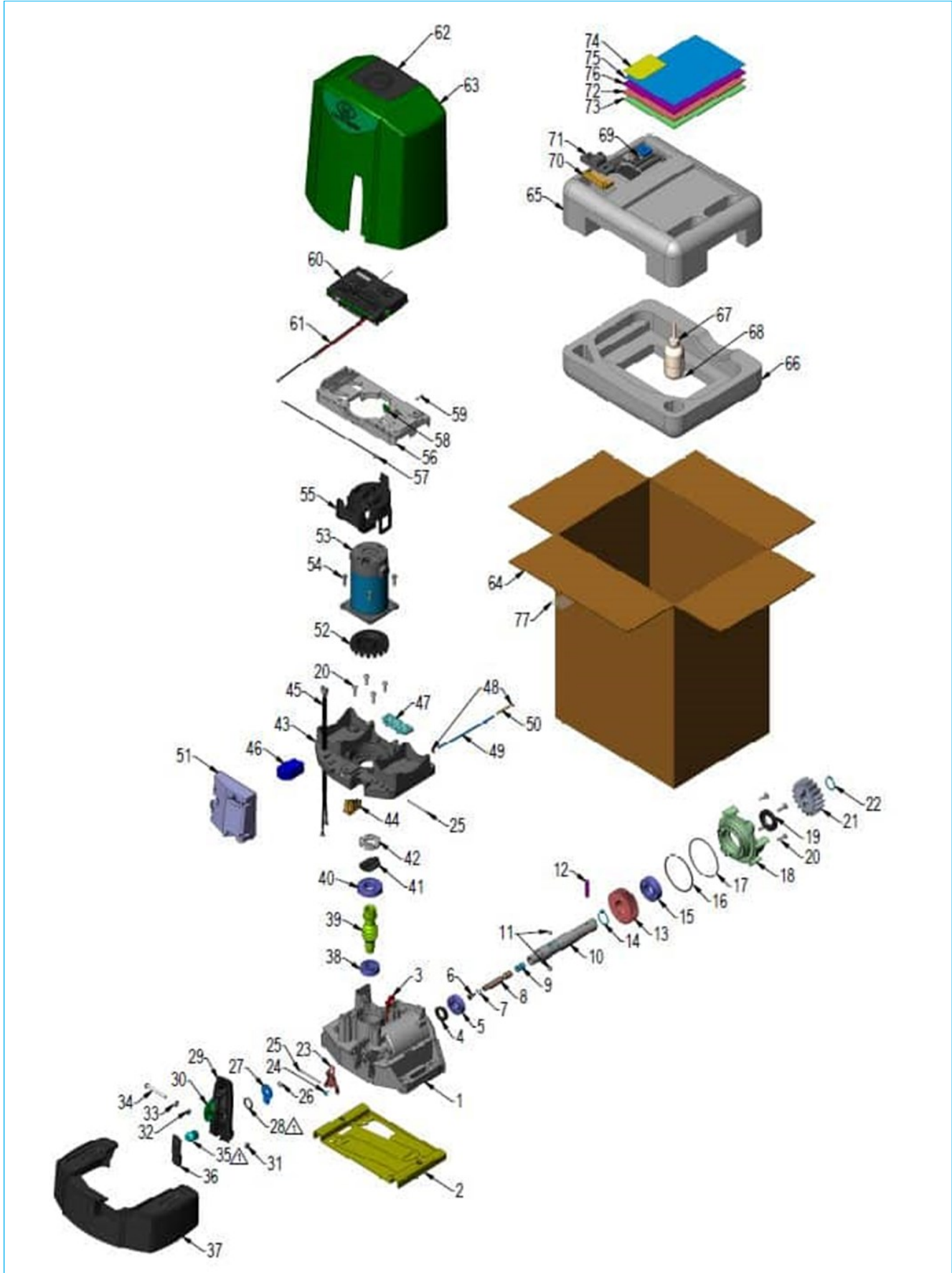


PLEASE CONTACT US FOR PRICING ON THESE ITEMS  
 CALL +64 (07) 3205 1123 OR EMAIL US INFO@ROTECH.COM.AU



Stock Code	Description
D10-1	1. A10/D10 Die Cast G/BOX V2
D10-10	10. Main Shaft – Ball Release
D10-11	11. 2 x Ball diameter 10
D10-12	12. Dia 8 x 40 Dowel pin
D10-13	13. D10 34T M2 Helical Gear – Ball Release
D10-14	14. Circlip 27mm, Ext, Galv
D10-15	15. Bearing 6205-Plain ERB (25x52x15)
D10-16	16. O-Ring, ID76 x 3
D10-17	17. O-Ring, ID80 x 2.5
D10-18	18. A10 Front BRG HSG and Pinion Guard V2
D10-19	19. Oil Seal 25x47x7 HMSA10
D10-2	2. A10/D10 Foundation Plate V2
D10-20	20. 8 x Screw Torx Taptite M6 X 20
D10-22	22. Circlip 24mm, EXT, Galv
D10-23	23. Release Lever Pressing
D10-24	24. Torsion Spring
D10-25	25. 2 x Split Pin Galv 4x50
D10-26	26. Washer Sprint Galv M8
24422	27-28+35. Cam For Camlock including Cam lock nut and A10 Camlock full thread and !10 Camlock full thread
D10-29	29. Release Handle Grip
D10-3	3. Dipstick A10 D10
D10-30	30. Universal Keytag V2
D10-31	31. M6 Nyloc Nut
D10-32	32. Nut Full Galv M6
D10-33	33. Washer Flat HD Galv M6X12.5X1.6
D10-34	34. M/C Screw Pan Pozi Galv M6x55
D10-36	36. A10 Lock Cover V2
D10-37	37. Cover Chassis V2
D10-38	38. Bearing 6203-Plain ERB (17x40x12)
D10-39	39. D10 Wormshaft V1
D10-4	4. Oil Seal 20x32x7 HMM10
D10-40	40. Bearing 6205 ZZ ERB
D10-41	41. Driven Coupling
D10-42	42. Coupling Slider
D10-43	43. D10 Sandwich Plate
D10-44+45	44+45. A10/D10 Encoder DOSS Assembly + D10/D5 EVO DOSS Harness V3
D10-46	46. A10/D10 Mag Switch Assy (Blue)
D10-47	47. D10 Cable Plate

Stock Code	Description
D10-48	48. 2 x Washer Flat LD S/S M4.3X9X0.8
D10-49	49. Cover Locking Pin
D10-5	5. Bearing 6004-Plain ERB (20x42x12)
D10-50	50. Cover Lock Pin Spring
2570	51. D10 Charger Assembly
D10-52	52. D10 Encoder Wheel
D10-53	53. Linix LX 7147-H 24V Motor(D10)
D10-54	54. 4 x PT Screw KB 6 X 20 Torx Drive WN1451
D10-55	55. D10 Motor Bracket ABS
D10-56	56. D10 Battery Stabilizer
D10-57	57. D10 Battery Link Wire
D10-58	58. Fuse ATO 30A Littlefuse 0257030-PXPV
D10-59	59. Fuse Glass 5 X 20MM F/B 3.15 A
D10-6	6. Skiffy Drive Fastener
2571	60. D10 Controller Assembly
D10-61	61. D10 Battery Leads
D10-62	62. D10 Cover Vent
24272	63. A10 & D10 Main Cover V2 Printed
D10-64	64. A10/D10 Box
D10-65	65. A10/D10 Polystyrene Top
D10-66	66. A10/D10 Polystyrene Base
D10-68	68. Tubing Clear Plastic
D10-69	69. A10/D10 Fastener Kit
D10-7	7. O-Ring, ID10 x 2
D10-72	72. D5 EVO/D10 Pocket Guide
D10-73	73. D10 Pocket Guide
D10-74	74. 2 x Label Warning Moving Gate 80X50mm STD
D10-75	75. Universal Safety Instruction Sheet V1
D10-76	76. Combine Slider User Guide V4
D10-77	77. Label Factory Sealed Anti Tamper 76X38
D10-8	8. Actuating Pin – Ball Release
D10-9	9. A10 Drive Key Spring
2420	D5 Item No: 14   D10 Item No: 21- Sintered Pinion 17T MOD 4
2419	D5 Item No: 37   D10 Item Nos:70-71 Gate Origin Magnet Mounting Kit

Rotech supply all forms of door and gate automation

#### Vehicle Access Control

- Booms Gates
- Sliding Gates
- Swing Gates
- Industrial Door Openers
- Solar Powered Gate Openers

#### Pedestrian Access Control

- Full Height Turnstiles
- Waist Height Turnstiles
- Supermarket Gates/Turnstiles
- Wheelchair Access Gates
- Rapid Access Gates

**Fast | Safe | Secure**

For more information: t: +61 07 3205 1123 | [www.rotech.com.au](http://www.rotech.com.au) | e: [info@rotech.com.au](mailto:info@rotech.com.au)

V0924