



Vehicle Access Control
Pedestrian Access Control
Safety & Security Equipment

T: +61 7 3205 1123

www.rotech.com.au

e: info@rotech.com.au

Ecoport Manual Supermarket Gate

Installation Instructions (V08/23)



Table of Contents

Table of Contents	2
1 Warranty	3
2 Safety	3
2.1 Designated Use	3
2.2 Areas of Application	3
2.3 Warning Notes	4
2.4 Safety Notes	5
3 Technical Data per Upright	6
3.1 Dimensions	6
3.2 Variants	7
4 Function	8
4.1 Mechanical Swing Door	8
4.1.1 Opening from one Side	8
4.1.2 Opening from both Sides	8
4.1.3 Lockable	8
4.1.4 Hold-open Function	8
4.1.5 Swivel-arm Latch	8
4.2 Panic Function	9
5 Installation	10
5.1 Installing the Base Upright	10
5.1.1 Mechanical Swing Door	10
6 Commissioning	11
6.1 Mechanical Swing Door	11
6.2 Lockable mechanical Swing Door	11
7 Function Testing	12
7.1 Testing the Panic Function	12
8 Error Checklist	12
8.1 Swing Arm not remaining in locked Position	12
8.2 Swing Arm not opening or closing	12
8.2.1 Mechanical Swing Door	12
8.2.2 Lockable mechanical Swing Door	12
9 Cleaning, Maintenance and Servicing	13
10 Dismantling	13

1 Warranty

Each product undergoes thorough final testing with Wanzl.
If nevertheless any complaints arise, Wanzl will handle such as follows:

Any defects detected during the first 12 months from the date of delivery (or other contractually fixed warranty period) will be remedied by Wanzl free of charge if it can be proved that such have been caused by defects in material or workmanship.

The warranty does not include parts with limited service life as e.g. photocells.

On rechargeable batteries Wanzl hold a warranty of 6 months.

Any material, assembly, travel and transport costs will be at the expense of Wanzl.
Any further claims will be excluded.

The warranty period starts upon the date of delivery or the assembly by Wanzl engineers or any specialist company authorised by Wanzl and amounts to a term of 12 months (or other contractually fixed warranty period).

Any exchanged, defective parts will pass to the ownership of Wanzl.

We will only assume full liability if any assemblies, services and repairs have been carried out by Wanzl engineers or any specialist company authorised by Wanzl.

No warranty claims will be accepted for any defects that have been caused by improper handling or accidental damage.

The warranty shall not cover any parts the service life of which is limited.

Any warranty claims will expire unless Wanzl receives a written notification indicating the job and order number and a detailed description of the defect within 14 days from its detection.

The warranty period will not be renewed by the provision of any warranty services.

Wanzl will grant a warranty of 12 months (or other contractually fixed warranty period) for any exchanged parts.

Warranty claims come under the statute of limitations 12 months (or other contractually fixed warranty period) after Wanzl receives the written announcement.

2 Safety



Read the instructions carefully before assembling the product and using it.
Store these instructions for future use.

2.1 Designated Use

- **The purpose of the swing door is to control the passage of people in the public and commercial sectors.**

2.2 Areas of Application

- **Application only indoors on steady, level and horizontal ground!**
- **When selecting the installation location, bear in mind the restriction on passage that the swing door will have in terms of the building's specific escape route concept.**
- **Observe the local construction and safety regulations as well as the guidelines of the health authorities and regulation authorities.**

2.3 Warning Notes



WARNING! Moving swing arm.

Result: Injuries due to moving swing arm.

- ▶ Make sure that persons in the vicinity of the swing arm stop only as required for passage; the swing arm closes automatically.



WARNING! Swing arms and base uprights can break under loads.

Result: The swing arms or base uprights may break or be damaged and people may be at risk of injury.

- ▶ Please ensure that no goods are deposited on swing arms or base uprights, or that swing arms and base uprights are not used as a supporting point.
- ▶ Please ensure that people do not advance into closed swing arms and base uprights with shopping trolleys, pushchairs, other motorised vehicles or when transporting goods, or otherwise damage swing arms or base uprights.
- ▶ Please ensure that children do not play in the vicinity of the swing arms, or climb or hang on the swing arms or base uprights.



WARNING! Lockable mechanical swing doors have no panic function.

Result: No opening without a key in case of panic.

- ▶ Note the absence of a panic function from this swing door variant when planning the building-specific escape route concept.
- ▶ Supervise the swing door and disable the lock in case of panic.



CAUTION! If the surface is not load-bearing, the standard fastening method may not be adequate.

Result: The base upright/flange fixing will be inadequately secured, posing a risk to people and the product.

- ▶ Use fastenings or adhesive anchors or similar equipment that is appropriate to the installation surface.
- ▶ For thicker layers of concrete, use longer screws and spacer sleeves if necessary.



CAUTION! Damage to supply lines running underground or behind the fitting wall.

Result: Damage to supply lines (electricity, water, heating, etc.).

- ▶ Before drilling mounting holes, find out whether there are any supply lines below or behind where you intend to drill.

2.4 Safety Notes

- Please observe the regulations of the state insurance commissions and employer's liability insurance associations.
- Please observe the accident prevention regulations.
- Do not put anybody at risk of injury.
- Only use the swing doors as intended.
- Only install the swing doors on a firm, smooth and flat surface.
- When installing the swing door using a flange fixing, make sure the fitting wall can support the weight.
- Only use suitable fastening and assembly material for mounting.
- Instruct your personnel regularly of the function of the swing doors and keep a record of the training.
- Do not misuse the panic function to open the swing door.
- Do not misuse the panic function as a personnel passage.
- Test the panic function for correct operation at regular intervals and keep a record of the test.
- Carry out maintenance work regularly and keep a record of it.
- Only use original Wanzl spare parts.
- Only have maintenance and repair work carried out by specialist Wanzl technicians or companies authorised by Wanzl.

3 Technical Data per Upright

3.1 Dimensions

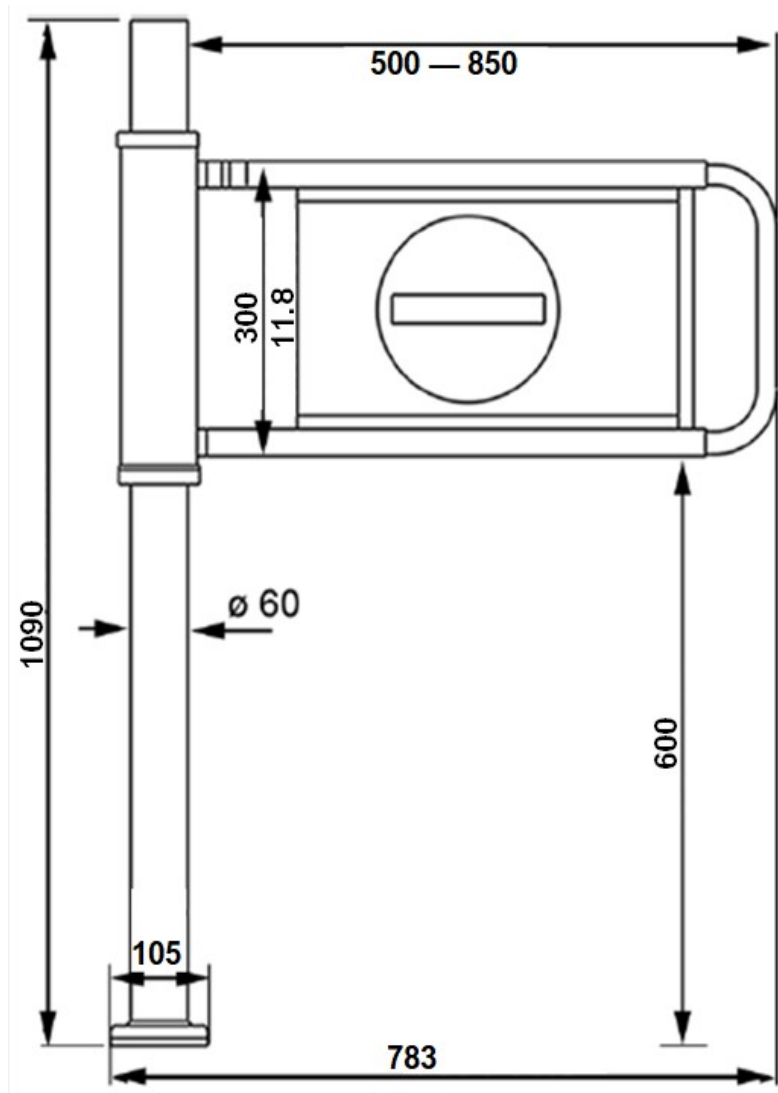


Fig. 1 Standard version (Dimensions in mm/inch)

3.2 Variants

There are numerous swing door variants available.

Special designs with attachments or special functions may deviate from this description.

The basic functions, however, will always correspond to the functions described in these instructions.

Installation of other variants is easily possible based on the versions illustrated here.



Fig. 2 Swing door with base upright

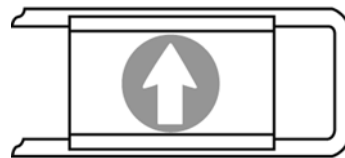


Fig. 5 Swing arm with sign

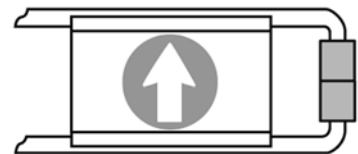


Fig. 6 Swing arm with deflector roll

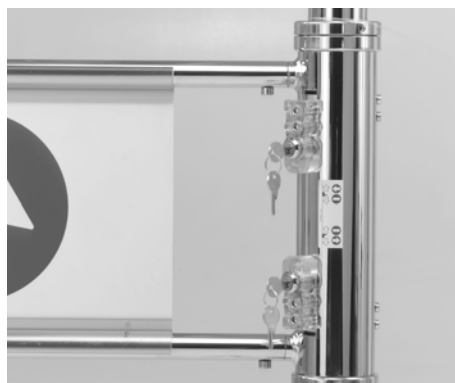


Fig. 3 Lockable swing door

4 Function



Note:

Opening from one side: Swing door can be used as an entrance or exit.
Opening from both sides: Swing door can be used as an entrance and exit.

4.1 Mechanical Swing Door

4.1.1 Opening from one Side

The swing door is normally closed.

The swing door opens to allow movement in the direction of passage when gentle pressure is applied to the swing arm.

The swing arm automatically swings back into its initial position once the swing door has been passed.

Passage in the opposite direction is not possible.

4.1.2 Opening from both Sides

The swing door is normally closed.

The swing door opens to allow passage when gentle pressure is applied to the swing arm.

The swing arm automatically swings back into its initial position once the swing door has been passed.

Passage in the opposite direction is possible in the same way.

4.1.3 Lockable

The direction of passage can be closed off as you wish.

Possible operating conditions

- Open from both sides
- Closed from both sides
- Opening from left side
- Opening from right side



The function of the lockable swing door is the same as described in chapter 5.1.1.

4.1.4 Hold-open Function

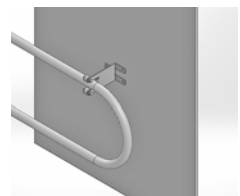
After the arm opens to a 90° angle, it remains held in this position.

- The installed mechanism holds the arm in the 90° position.
The arm is returned to its previous position by tapping it.

4.1.5 Swivel-arm Latch

After the arm opens to a 90° angle, it remains held in this position.

- A mounted bracket holds the arm in the 90° position.
The arm is returned to its previous position by pulling the arm out of the bracket.



4.2 Panic Function



The panic function can be triggered when the passage is closed.
 The panic function should only be used in case of emergency such as hazard, fire and so on.
 Do not misuse the panic function to open the passage.
 Do not misuse the panic function as a personnel passage.
 Check the panic function regularly (at least every six months) and keep a record of the check.



Lockable mechanical swing doors have no panic function.

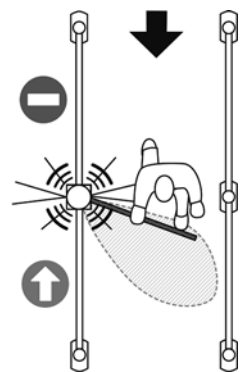


CAUTION! The swing arm can be opened by 90° in the direction of the exit in case of panic. Any attempt to force the swing arm further will result in damage to the swing door.
 Result: Damage to the swing door and out-of-commission panic function.

- ▶ Make sure that the swing arm is not forced past the preset 90° opening angle when the panic function is triggered.

Exiting of the access area through the swing door, for example in case of panic, is possible provided there is an appropriate counterpressure acting on the swing arm.

The application of force releases the latch on the swing arm. The swing arm can then be moved and the passage opened.



Once the panic function has been triggered, the swing arm must be manually reset to its initial position.



CAUTION! Danger due to sudden engaging of the swing arm during resetting.
 Result: Risk of personal injury when engaging the swing arm.

- ▶ Hold the swing arm firmly in the hand when resetting.

The emergency exit direction (exit direction) is indicated by a sticker on the base upright.



5 Installation



Caution:

When selecting the installation location, note the width of the swing arm and the required swivel range as well as the required safety distances.

5.1 Installing the Base Upright

5.1.1 Mechanical Swing Door

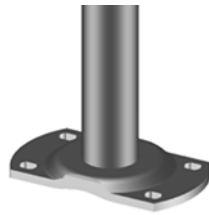


Fig. 9

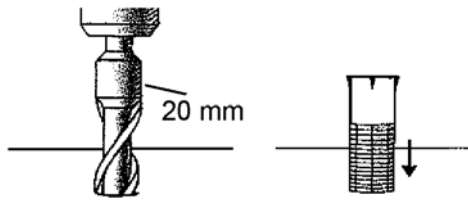


Fig. 10

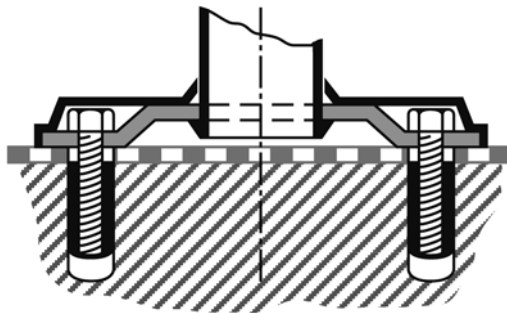


Fig. 11

- ▶ Position the upright at the required location.
- ▶ Lift the base plate cover and mark the position of the four fixing holes for the base plate on the ground.
- ▶ Drill the four fixing holes for the base using a 20 mm concrete drill bit.
- ▶ Completely clear all drilling dust (drilling dust reduces the holding force of the plugs).
- ▶ Insert the plugs flush with the ground surface.
- ▶ Screw the M10x60 hexagonal screws into the M10 plugs.
- ▶ Tighten the M10x60 hexagonal screws until the plugs become stuck.
- ▶ Remove the hexagonal screws.
- ▶ Locate the base over the inserted plugs.
- ▶ Lift the base plate cover and insert the M10x60 hexagonal screws through the fixing holes in the base plate and into the plugs.
- ▶ Secure the base plate using the hexagonal screws.

6 Commissioning

6.1 Mechanical Swing Door

- ▶ Check whether the base upright or the flange is correctly installed.

The swing door is ready to use.

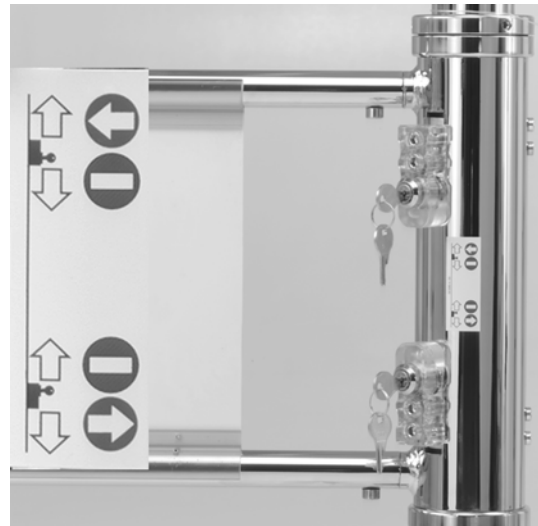
6.2 Lockable mechanical Swing Door

- ▶ Check whether the base upright or the flange is correctly installed.

- ▶ Set the required opening function using the lock position.

- Release one side (entrance)
 - Top key pointing upwards
 - Bottom key pointing upwards
- Release one side (exit)
 - Top key pointing downwards
 - Bottom key pointing downwards
- Release both sides
 - Top key pointing upwards
 - Bottom key pointing downwards
- Block both sides
 - Top key pointing downwards
 - Bottom key pointing upwards

The swing door is ready to use.



7 Function Testing



For more on function testing, see also the information in chapter 8.

7.1 Testing the Panic Function



Does not apply to lockable mechanical swing doors.



CAUTION! The swing arm can be opened by 90° in the direction of the exit in case of panic. Any attempt to force the swing arm further will result in damage to the swing door. Result: Damage to the swing door and out-of-commission panic function.

- ▶ Make sure that the swing arm is not forced past the preset 90° opening angle when the panic function is triggered.

The swing arm is closed.

- ▶ Try to open the swing arm in the exit direction.

The swing arm blocks passage and will not open.

- ▶ Apply strong pressure to the swing arm.

*The panic function becomes operative and the swing arm can be opened.
An acoustic panic alarm (optional) may sound from the control panel.*

- ▶ Reset the swing arm by hand.

The acoustic panic alarm is silenced.

8 Error Checklist



Notify Customer Service if the corrective measures outlined below are unsuccessful.

8.1 Swing Arm not remaining in locked Position

- ▶ Check whether the swing arm is set to the emergency exit direction in accordance with the panic function pictogram.
 - Move the arm 90° past the closed position in the opposite direction.

8.2 Swing Arm not opening or closing

8.2.1 Mechanical Swing Door

- ▶ Check whether any objects are blocking the swivel range.
 - Clear the swivel range.

8.2.2 Lockable mechanical Swing Door

- ▶ Check whether any objects are blocking the swivel range.
 - Clear the swivel range.
- ▶ Check whether the position of the locks matches the required function as per the panic function pictogram.
 - Set the locks to the correct position as per the pictogram.

9 Cleaning, Maintenance and Servicing

Regular cleaning, servicing and inspection will promote the recoverability of the investment in the system.

- ▶ Clean the unit using a soft, clean cloth and hand detergent added to warm water (25 °C) following commissioning and at regular intervals.
- ▶ The cloth used for cleaning should be barely dampened.
- ▶ Apply the stainless steel protector INOX Brilliant to any stainless steel parts following drying.
- ▶ Remove any flash rusting from stainless steel parts by hand using Scotch polishing pads, clean the surface and apply the stainless steel protector INOX Brilliant.
- ▶ Wanzl recommends a full cleaning at regular intervals or at least every six months.
- ▶ Do not use microfibre or similar cloths for cleaning.
- ▶ Inspect the system at regular intervals to ensure it is in proper condition.
- ▶ Have the electrical installation checked by a trained electrician at regular intervals.
- ▶ Document all inspections in writing.

10 Dismantling

- ▶ Dismantle the system in the reverse sequence to installation (see chapter 5).

Wanzl GmbH & Co. KGaA,
Rudolf-Wanzl-Straße 4, 89340 Leipheim, Germany
Phone +49(0)8221/729-0, Fax +49(0)8221/729-1000,
E-mail: info@wanzl.com, Internet: www.wanzl.com

The copyright for these instructions is owned by Wanzl.

These instructions are intended for use by the operator of the equipment and his staff alone. They contain regulations and instructions, the whole of which or part thereof may not be reproduced, distributed or communicated in any other way. Infringements of the copyright may lead to prosecution.

Measurements are approximate. We reserve the right to make modifications.