



# Microwave Touchless Switch (ClearWave)

## Instruction Manual

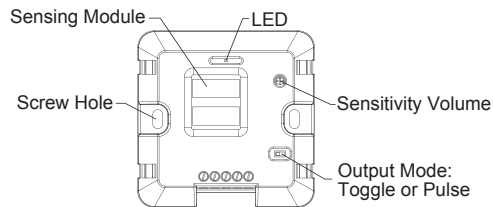
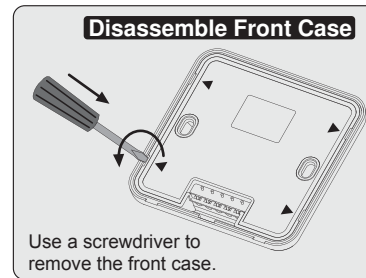
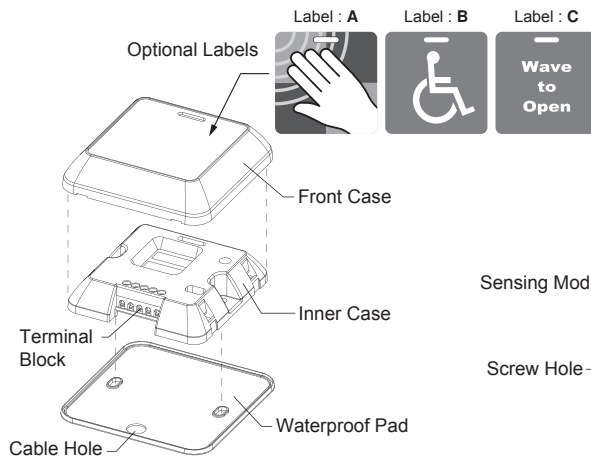
The ClearWave is a highly sensitive, high performance switch designed to activate automatic doors by detecting the movement of a person or object. For the safe and accurate use of this product, please read this instruction manual carefully.

### 1 Technical specifications

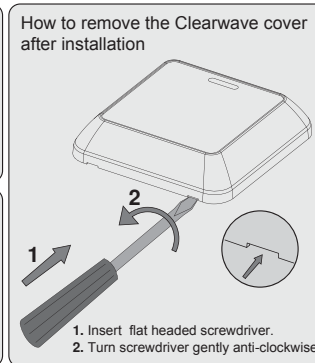
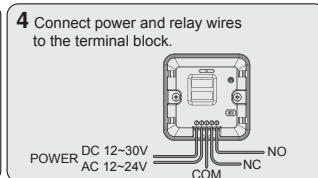
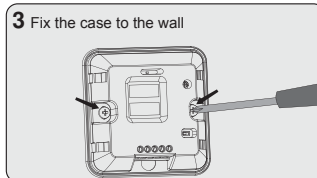
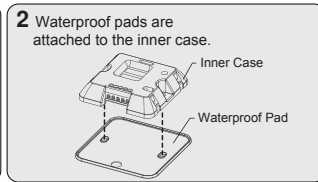
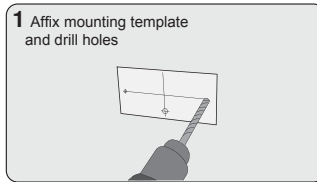
**Technology :** Microwave Motion Sensor  
**Microwave Module :** 24.125GHz  
**Product Size :** 85.9mm x 85.9mm x 20mm (W x L x H)  
**Detection Range [Hand] :** ±5~40cm  
**Detection Mode :** Motion (Bi-directional)  
**Speed of Target :** Min. ±3cm/s, Max. ±1.5m/s

**Power Supply :** DC 12~30V, AC 12~24V  
**Current Consumption :** < 1.4W  
**Output :** Relay Contact (1A/24VDC)  
**Output Hold Time :** 1.2Sec. (PULSE mode)  
**Operating Temp/Humidity :** -20°C~+60°C/0~90%  
**International Protection :** IP54

### 2 General Information



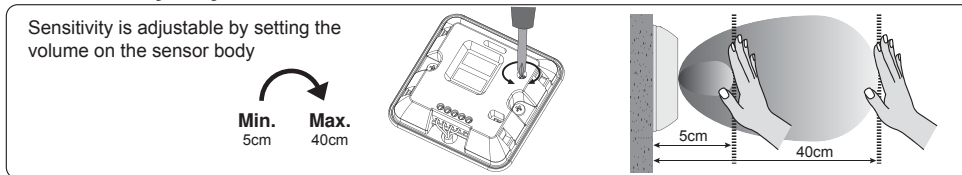
### 3 Installation Guide



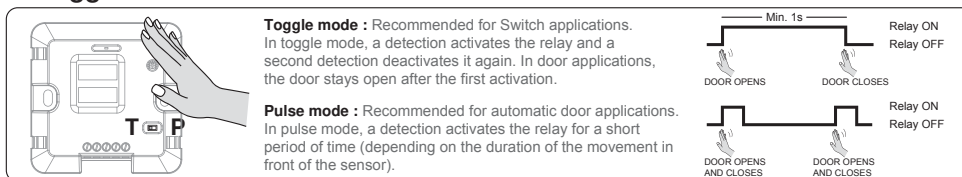
#### Caution

Do not supply power during installation.  
 Do not disassemble or modify the device, it may cause fire or electric shock

### 4 Sensitivity Adjustment



### 5 Toggle mode / Pulse mode



### 6 Mounting Information

