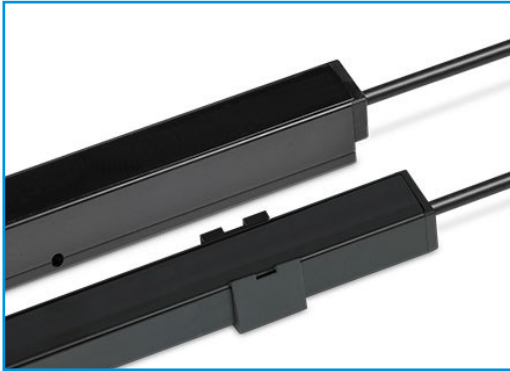


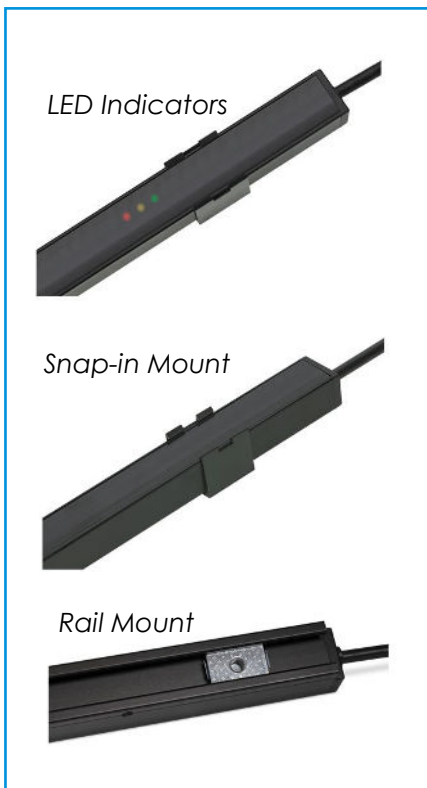
# SafePass SG19 Safety Light Curtain

Provides increased safety in harsh environments



The SG19 light curtain system consists of a self-contained transmitter, SGT and receiver, SGR, which are positioned opposite of each other.

The units are housed in compact, but sturdy, aluminium profiles, which are sealed to IP 67 waterproof specification.



The signal of each individual channel is adjusted automatically, which compensates for misalignment and contamination during operation, The transmitter and receiver units are optically synchronised.

The advanced automatic signal-tracking (AST) feature ensures that no onsite set up or adjustments are required.

Both the transmitter and receiver detectors are protected against reverse polarity of power supplies, control input and output signals. The output is also protected against short circuit and inductive loads.

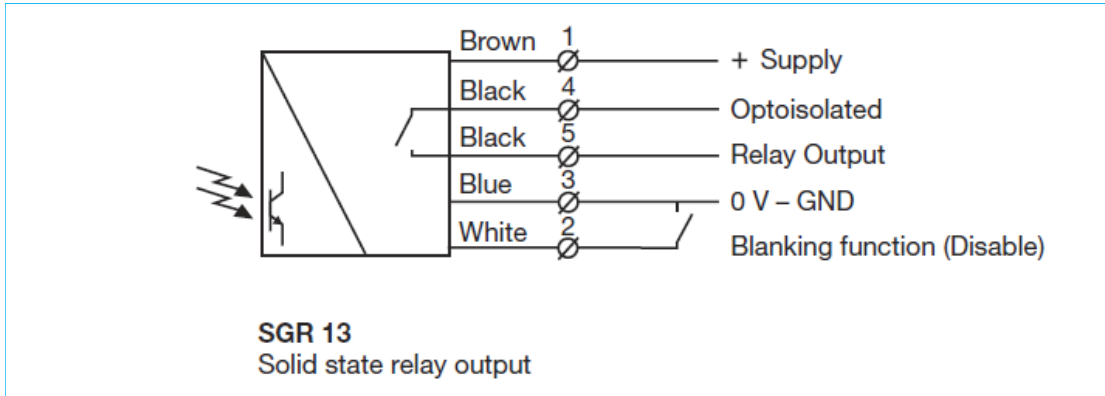
## SafePass SG19 Safety Light Curtain features include:

- 1-10 metre sensing range
- 40 parallel scanning beams
- Active height of 1800 mm
- Detector length of 1930 mm
- Plug connection
- Automatic sensitivity adjustment
- Compact aluminium IP67 housing
- Power, output and system status indicators
- 12-30 V dc supply voltage
- 5 wire solid state relay output
- Test input
- Dynamic sequential blanking function ignores the moving door

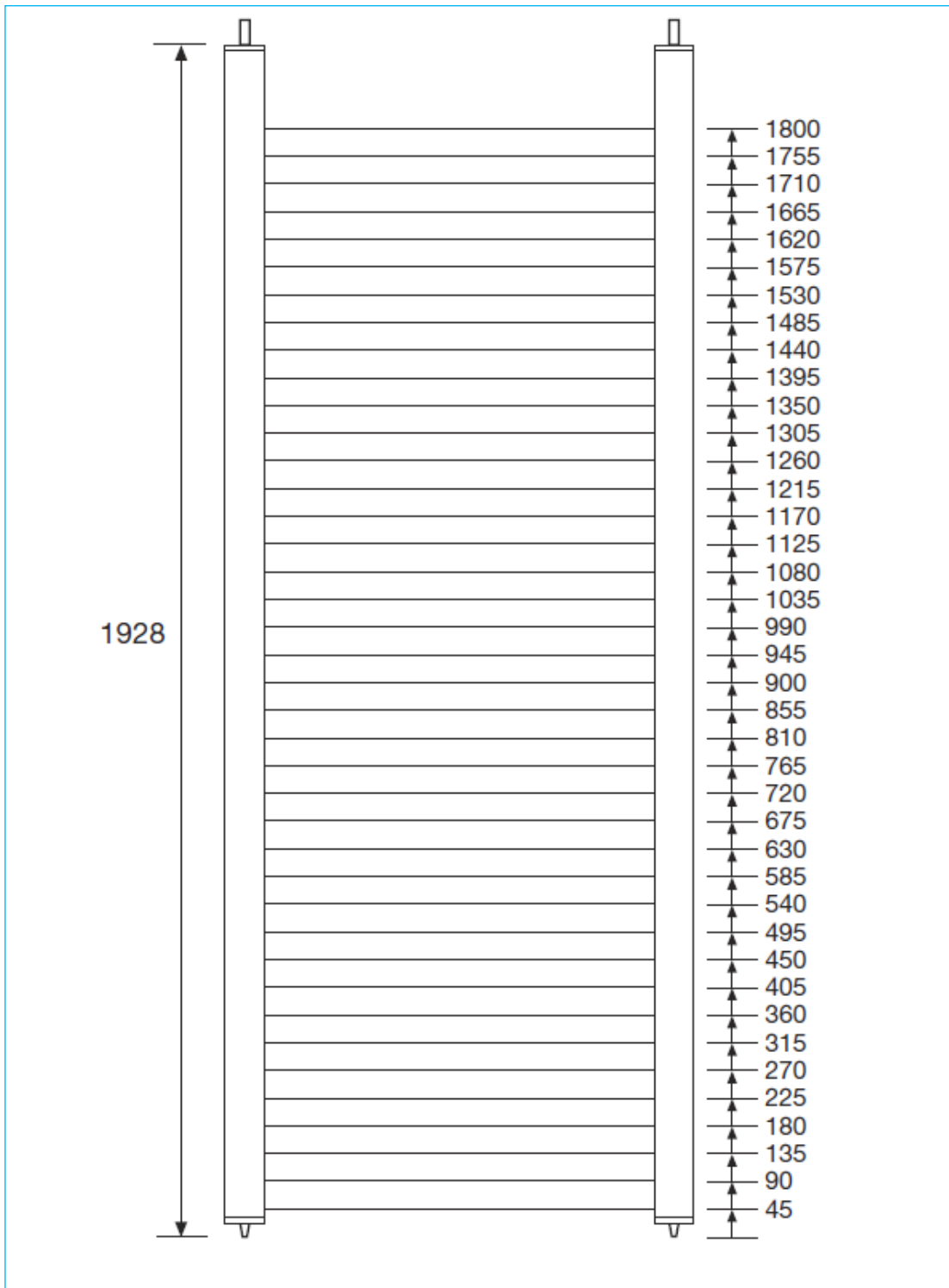
## Technical Specifications

SafePass SG19 Safety Beams	SG19TX Transmitter	SG19RX Receiver
Voltage 12-30 Vdc	12-30 Vdc	
Current consumption	70 mA (RMS)	30 mA
Max output load Solid state	-	100 mA
Short circuit protected	-	Yes
Inductive load protection	-	Yes
Reverse polarity protected	Yes	
Number of parallel beams	40	
Active height	1800	
Sensor spacing	45 mm	
Response time	-	50 ms
Maximum sequential blanking speed	0,9 m/s	
Minimum size of detectable objects	50 mm	
Power on indicator	Green LED	
Output indicator	-	Yellow LED
System status indicator	-	Red LED
Opening angle	-	+/- 10°
Emission angle	+/- 10°	-
Housing dimensions (w x d) G-profile	19,5 mm x 20,8 mm	
Housing material Profile   Lens Cover	Aluminium (black anodised)	Polycarbonate
Connection	10m Cable and M12 Plug	10m cable and M12 Plug
Light immunity @ 5° incidence	-	100 000 lux
Temperature operation	+20 to 65 °C	
Sealing class	IP 67	
Housing length	1948 mm	
Active height	1800 mm	
Connection Output	-	Solid State Relay (NC)

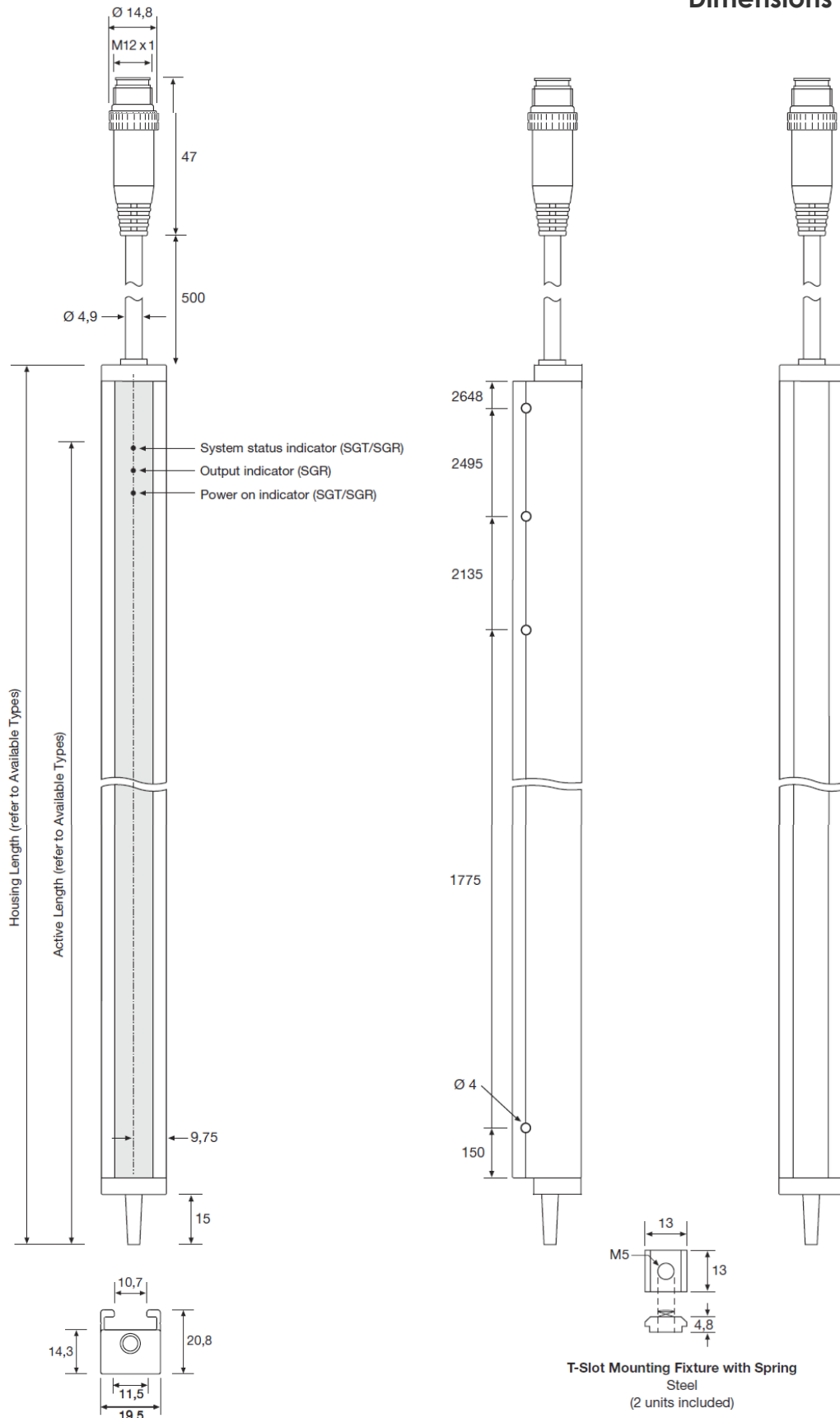
## Wiring Diagram



## Beam Pattern 1948 mm housing lengths



## Dimensions



Rotech supply all forms of door and gate automation

### Vehicle Access Control

- Booms Gates
- Sliding Gates
- Swing Gates
- Industrial Door Openers
- Solar Powered Gate Openers

### Pedestrian Access Control

- Full Height Turnstiles
- Waist Height Turnstiles
- Supermarket Gates/Turnstiles
- Wheelchair Access Gates
- Rapid Access Gates

Fast | Safe | Secure